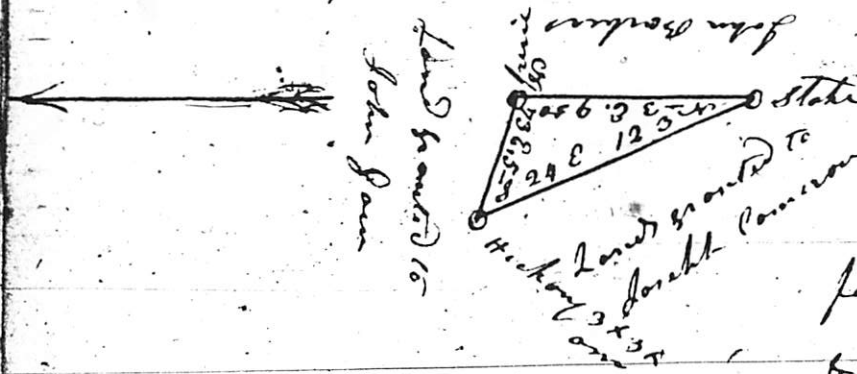


Scale 10 chains for inch



South Carolina } Pursuant to a

Warrant to me directed by James

Udall Commissioner of Locations

for Fairfield District, I have admeasured

& laid out unto James et Barber a

Tract of Land containing two acres & 4/10th lying & being in the State
 & District aforesaid on the branches of Wateree Creek, Bounded on
 the E. by John Barber, & on the W. by Land granted to John Gann
 & on the S. by Land granted to Joseph Cameron, having such
 corner stone & marks as is represented by the above plat

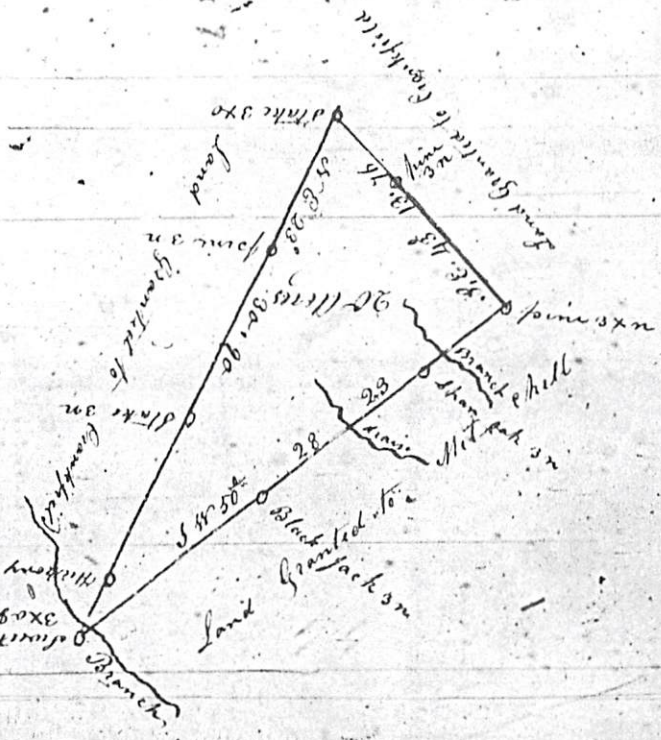
Certified this 23^d day of February 1835

(Recorded Feb 25th 1835)

Green B. Montgomery J.,

10 Pharms for dock

doubt involving 3/4 portions
 to the amount from James Dick
 Dept Commission of Assessor
 for Suffolk District
 have administered & had
 out into William Johnson
 a parcel on head of land
 containing twenty acres
 situated in Suffolk
 branches of Sugar Creek
 water of Water River
 & Lake with form, made
 boundaries 86, as the above
 lot returned & conveyed
 23d Decr 1834.
 Geo. D. Winder
 Esq.



Book to show the land
 John Gain
 land granted to
 South Carolina
 grant
 made Commission of Assessor
 for Suffolk District, Commission of Assessor
 & land water James of Boston
 & Richard Howard on the branch of Water Creek, bounded on
 the E. by John Parker, & on the W. by land granted to John Gain
 on the 28th day of February 1835
 (Recorded 31st Decr 1834)
 Geo. D. Winder Esq.

